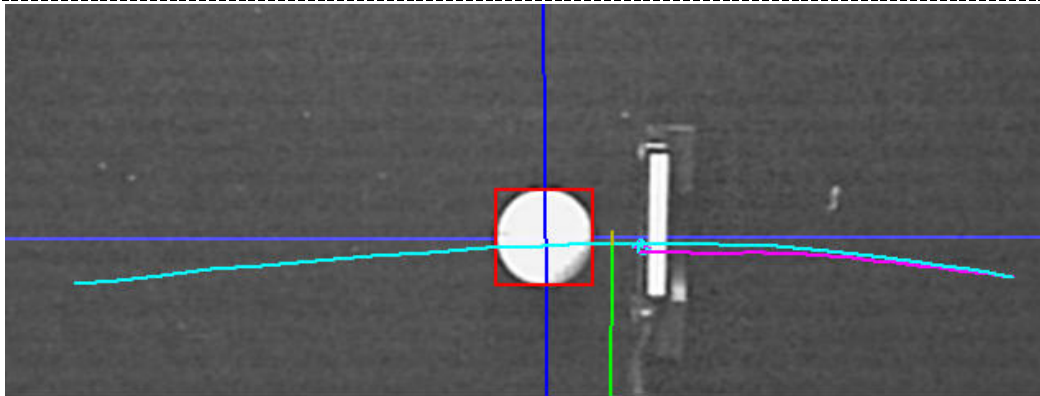


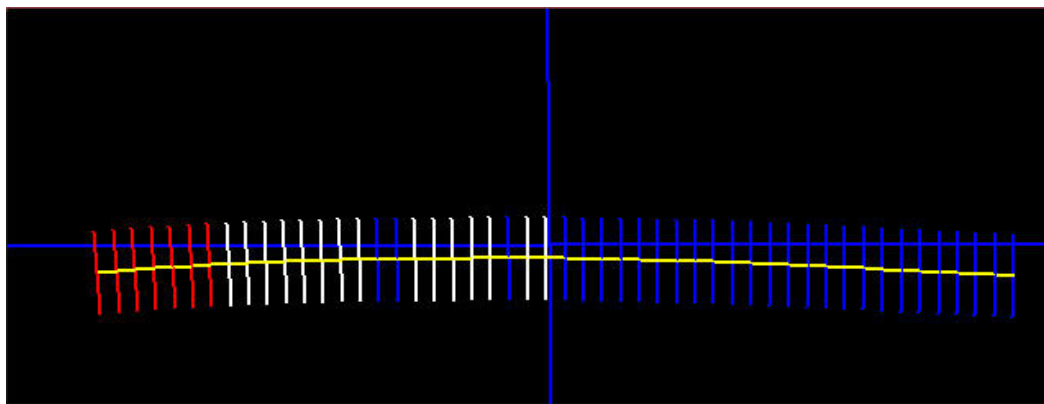
STROKE PATH



STROKE MEASUREMENTS

Last Stroke		This Stroke		Lesson notes
Add: 0.54 C Imp: 0.57 C Chg: 1.22 O	AIM (degrees)	Add: 0.54 C Imp: 0.57 C Chg: 1.22 O		Your putter face was slightly closed at address and at impact. Because you are consistently closed at both address and impact, this indicates you are holding the putter very steady during the stroke. Try opening the putter face slightly at address before putting. You also might try placing the ... (see program for more)
Too much arc	ARC	Too much arc		This shows you have more arc in your stroke than the average tour level player however, this may be the right amount of arc for you depending on your body type (shorter golfers tend to have more arc). Look at the path of your stroke to see if the amount of arc is consistent from putt to putt. If ... (see program for more)
0.49 on toe	CONTACT (inches)	0.46 on toe		The ball made contact with the putter face slightly towards the heel of the putter. Depending on your putter design, this may close the putter face at impact and slightly pull the putt and/or come up short. Try adjusting your stance by moving 1 inch away from the ... (see program for more)
Much too tentative	MOTION	Much too tentative		As you approach ball impact, you are significantly slowing the putter and decreasing head speed. This abrupt change in speed can result in poor ball roll control; typically leaving the ball short of the hole. This is sometimes caused by a backstroke that is excessively long; try shortening your ... (see program for more)

FACE CHECK



The path of your putting stroke has an "more inside" to "less inside" shape. This means you are pushing across the ball. In addition, you are manipulating the putter face **closed relative to your path** in an attempt to square up the face at impact. This manipulation will tend to cause inconsistencies and pushed putts. Try letting your putter come naturally inside during your back stroke and the same amount at follow through and don't manipulate the putter with your hands or arms.

Ideally you would like to see a very balance stroke (same amount inside at back stroke and at follow through) and all white lines through most of the forward motion of the stroke. An model stroke that promotes consistency is shown below:

